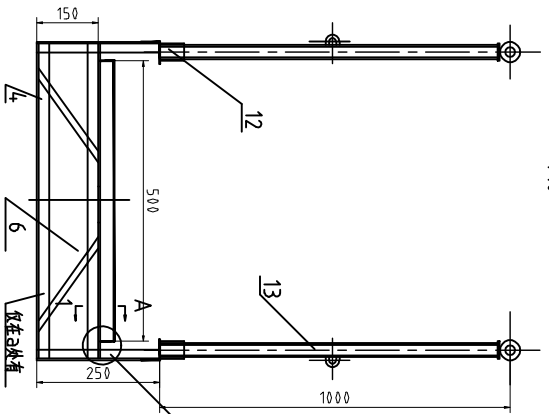
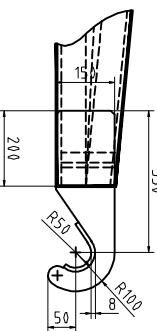
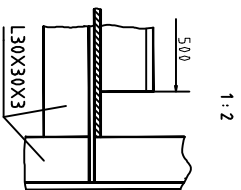
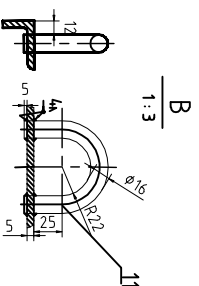
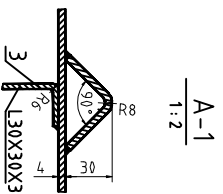
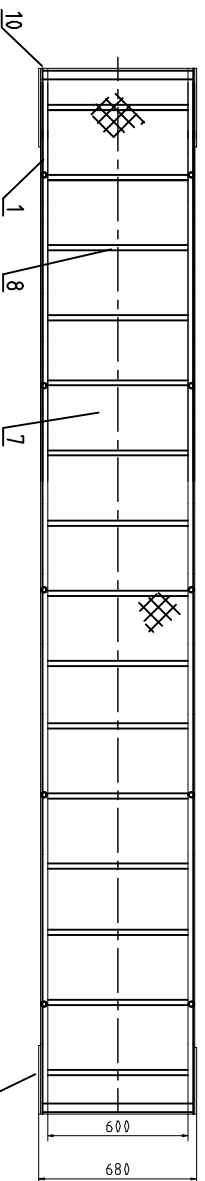
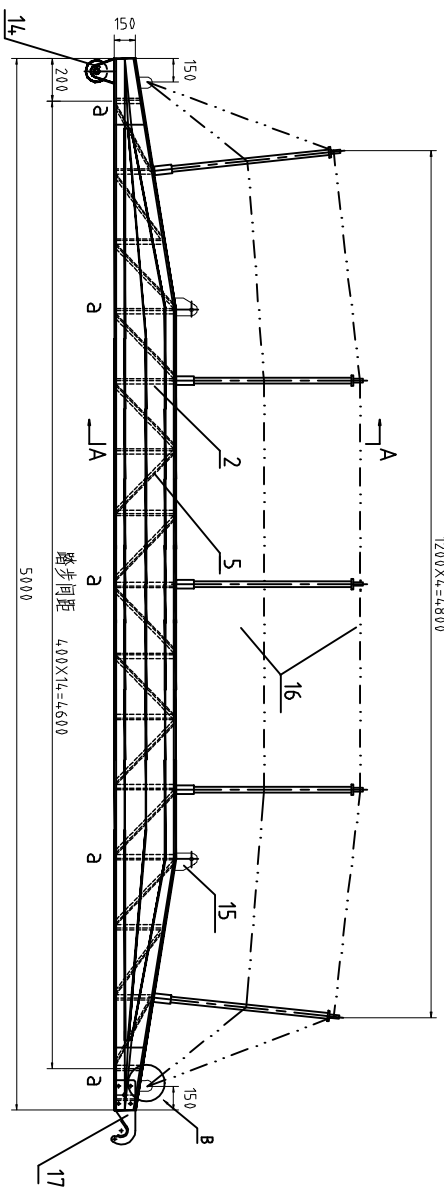


1200X4=4800



Technical requirements

1. Parts made of aluminum must be oxidized according to standard GB/T 792-81
2. The maximum usable angle of this ladder is 30°
3. Finished framework of ladder should not be changed in shape and defect. checking is referred standard of CBx3116-82.
4. Load test:  
When the part ladder is supported horizontally on both end supports and applied with 75kg for each step, there shall be no defect in all parts, and also the maximum deflection in the middle of the ladder shall not be exceeded 25 mm.

技术要求

1. 铝质零件均需进行氧化处理，质量标准按CB×/Z 92-81。
2. 本梯最大使用角度30°。
3. 完工后的梯架不应有歪斜、扭曲、变形现象，制造误差应符合CB×3116-1982及MSC-1/Circ-1331。
4. 强度试验：  
将梯架呈水平状搁置于两端支架上，按每两级踏步75kg荷载试验，在荷载下，梯架各部位不允许产生形状失真，最大挠度值不得大于25 mm。

NO	代	MARK	名称	材料	重量	备注
NO	MARK	名称	材料	重量	备注	REMARKS
17			梯架	铝质	3	
16			梯架	尼龙	30	
15			踏步	铝质	0.4	
14			踏步	铝质	8	
13			踏步	铝质	15	
12			踏步	铝质	1.8	
11			踏步	铝质	0.2	
10			踏步	铝质	0.5	
9			踏步	铝质	1	
8			踏步	铝质	6	
7			踏步	铝质	55	
6			踏步	铝质	25	
5			踏步	铝质	4	
4			踏步	铝质	6.75	
3			踏步	铝质	4	
2			踏步	铝质	4	
1			踏步	铝质	4.3	

铝质踏板  
L=5000  
ALUMINUM WHARE LADDER

CB×3116-82

图号	修改	日期	共	页
120	1:20			